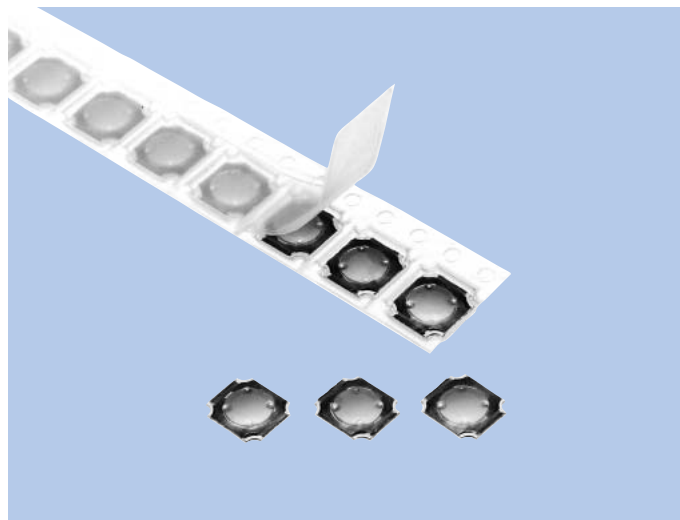


Element Key Switches

SOP Series

FEATURES

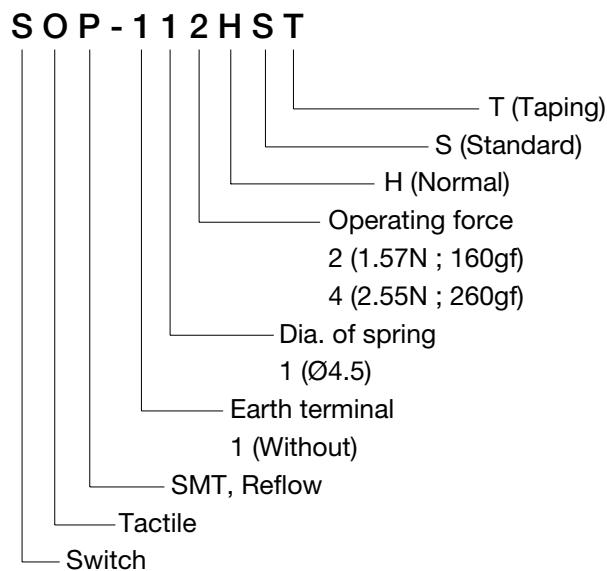
1. Extra low-profile 0.6mm thickness.
2. SMT type and reflow-soldering for surface mounting.
Taping type for auto mounting is available.
3. Click feel with metal diaphragm contact.



USES

1. Operating switch for small size electric equipments.
2. Best suited as a operating switch in portabe audio, visual products.
3. For mobilephone, personal terminal and other compact equipments.

MODEL NAME CODE



SPECIFICATIONS

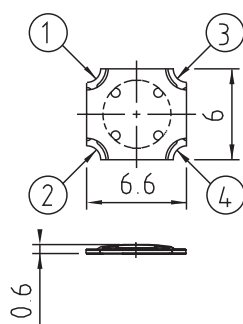
Electrical Characteristics	Rating	50mA, 12V DC
	Contact Resistance	1Ω or less
	Insulation Resistance	100MΩ or more
	Withstand Voltage	1 minute at 100V AC
	Bouncing	10ms or less
Mechanical Characteristics	Operating Force	1.57N, 2.55N (160gf, 260gf)
Life		100,000 cycles

TYPE

Model Name Code	Order Number	Operating Force	Pcs
SOP-112HST	R66 5373	1.57N (160gf)	5,000
SOP-114HST	R66 5374	2.55N (260gf)	5,000

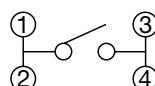
DIMENSIONS

Outer Dimensions

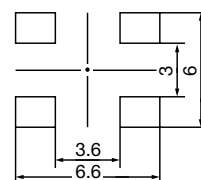


Unit : mm

Circuit Diagram

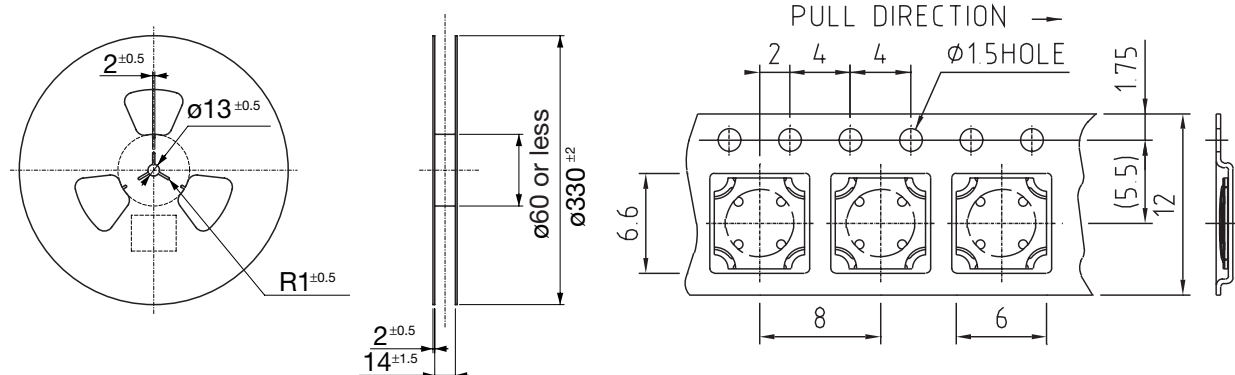


Mounting Pattern



Unit : mm

TAPING SPECIFICATIONS



Unit : mm

NOTICE

- Please do not wash this switch.
- A rule of this switch position don't making with taping.