

# SC015(1.0A)

T.03-13

## GENERAL USE RECTIFIER DIODE

### Features

- Surface mount device
- High reliability

### Applications

- General purpose rectifier applications

### Maximum Ratings and Characteristics

- Absolute Maximum Ratings

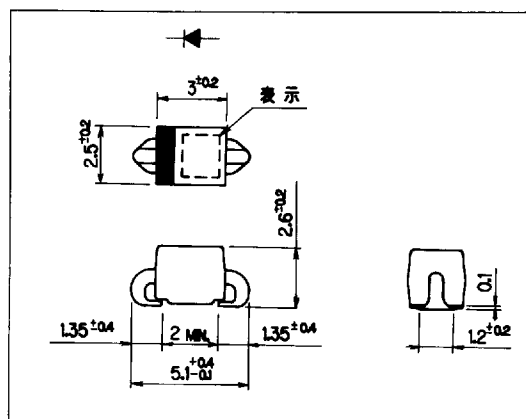
Items	Symbols	Conditions	Ratings			Units
			-2	-4	-6	
Repetitive Peak Reverse Voltage	$V_{RRM}$		200	400	600	V
Non-Repetitive Peak Reverse Voltage	$V_{RSM}$		200	400	600	V
Average Output Current	$I_o$	$T_a=40^\circ\text{C}$ Resistive load	1.0*			A
Surge Current	$I_{FSM}$	10ms Sine wave	40			A
Operating Junction Temperature	$T_j$		-40~+140			$^\circ\text{C}$
Storage Temperature	$T_{stg}$		-40~+140			$^\circ\text{C}$

Electrical Characteristics ( $T_a=25^\circ\text{C}$  Unless otherwise specified)

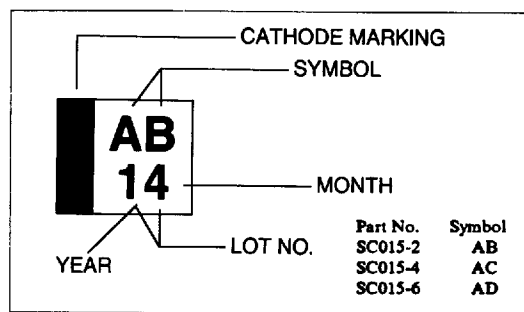
\* Mounted to glass fabric epoxy resin printed circuits

Items	Symbols	Conditions	Ratings	Units
Forward Voltage Drop	$V_{FM}$	$I_{FM}=2\text{A}$	1.1	V
Reverse Current	$I_{RRM}$	$V_R=V_{RRM}$	10	$\mu\text{A}$
Thermal Resistance	$R_{th(j-a)}$	junction to ambient	120*	$^\circ\text{C}/\text{W}$

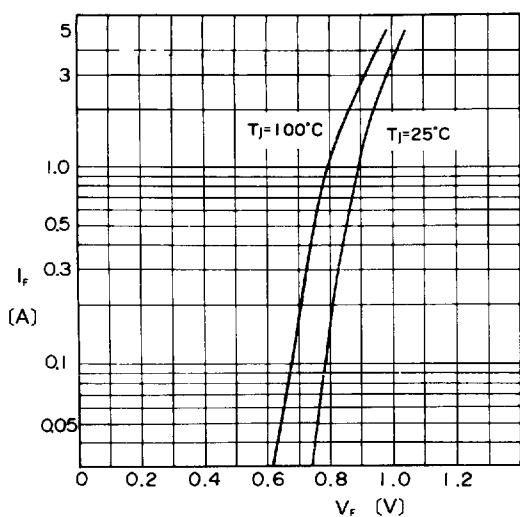
### Outline Drawings



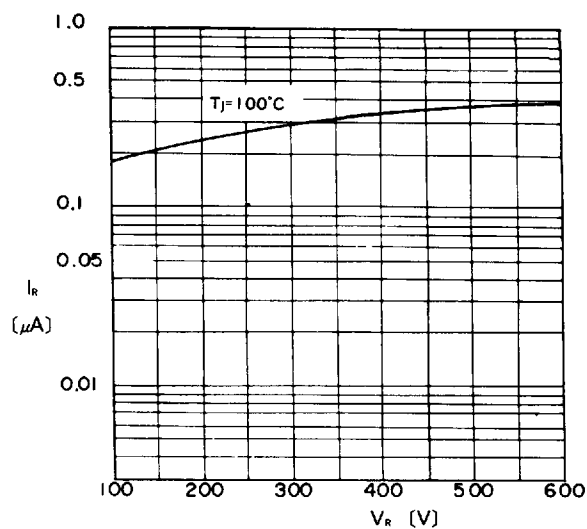
### Marking



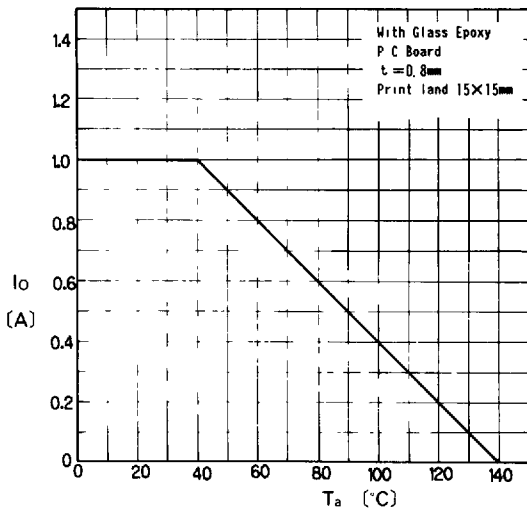
Characteristics **SC015(1.0A)**



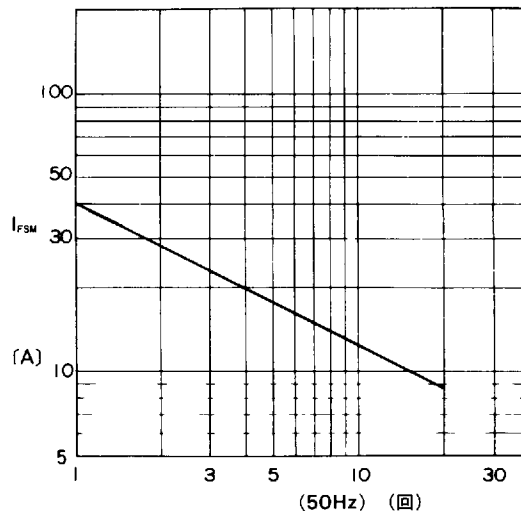
Forward Characteristics



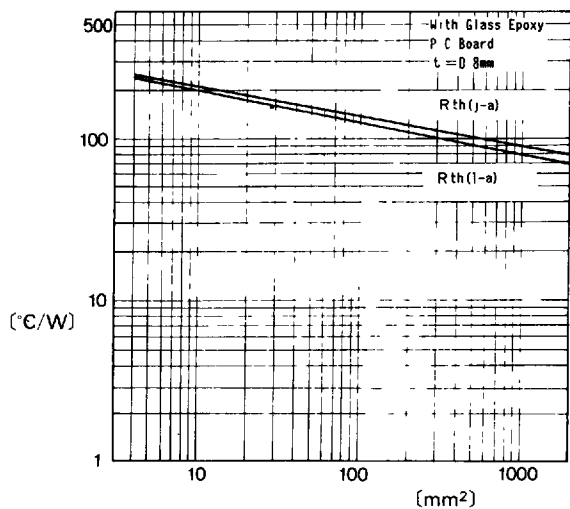
Reverse Characteristics



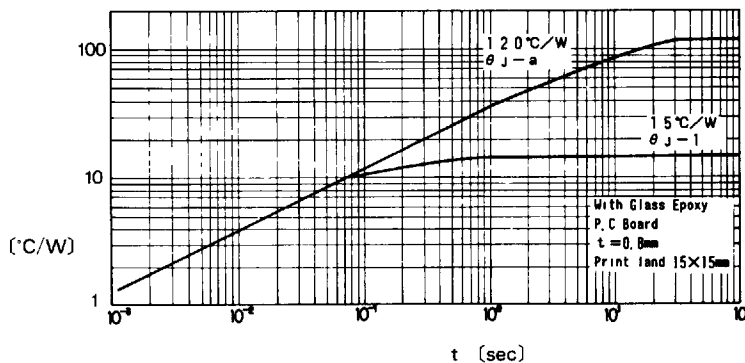
Current Derating ( $I_o$ - $T_a$ )



Surge Capability



Thermal Resistance Print Land



Transient Thermal Impedance