



3-TERMINAL POSITIVE VOLTAGE REGULATOR

■ GENERAL DESCRIPTION

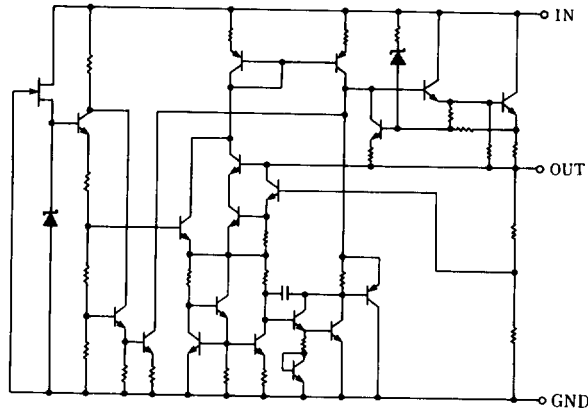
The NJM7800 series of monolithic 3-Terminal Positive Voltage Regulators is constructed using the New JRC Planar epitaxial process. These regulators employ internal current-limiting, thermal-shutdown and safe-area compensation making them essentially indestructible. If adequate heat sinking is provided, they can deliver over 1A output current. They are intended as fixed voltage regulators in a wide range of applications including local (on card) regulation for elimination of distribution problems associated with single point regulation. In addition to use as fixed voltage regulators, these devices can be used with external components to obtain adjustable output voltages and currents.

■ FEATURES

- Operating Voltage
- Internal Short Circuit Current Limit
- Internal Thermal Overload Protection
- Excellent Ripple Rejection
- Guarantee'd 1.5A Output Current
- Package Outline
- Bipolar Technology

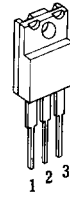
TO-220F, TO-252

■ EQUIVALENT CIRCUIT



■ PACKAGE OUTLINE

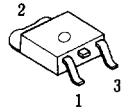
(TO-220F)



NJM7800FA

- 1. IN
- 2. GND
- 3. OUT

(TO-252)



NJM7800DLA

- 1. IN
- 2. GND
- 3. OUT

(note) The radiation fin is connected pin2.



■ ABSOLUTE MAXIMUM RATINGS

(Ta=25°C)

PARAMETER	SYMBOL	MAXIMUM RATINGS		UNIT
Input Voltage	VIN	7805~7809	35	V
		7812~7815	35	
		7818~7824	40	
Storage Temperature Range	Tstg	-40 ~ +150		°C
Operating Temperature Range	Operating Junction Temperature	Tj	-30~+150	°C
		Topr	-30~+75	
Power Dissipation	Pd	TO220F	16 (Tc≤70°C)	W
		TO252	10 (Tc=25°C)	
			1 (Ta≤25°C)	

■ THERMAL CHARACTERISTICS

Thermal Resistance	Junction-to-Ambient Temperature	θ ja	TO220F	TO252	°C/W
			60	125	
	Junction-to-Case	θ jc	5	12.5	

■ ELECTRICAL CHARACTERISTICS (C1=0.33 μF, C0=0.1 μF, Tj=25°C) Measurement is to be conducted in pulse testing.

PARAMETER	SYMBOL	TEST CONDITIONS	F TYP.			DL TYP.			UNIT
			MIN.	TYP.	MAX.	MIN.	TYP.	MAX.	
NJM7805A									
Output Voltage	VO	VIN=10V, IO=0.5A	4.8	5.0	5.2	4.8	5.0	5.2	V
Quiescent Current	IQ	VIN=10V, IO=0mA	—	4.2	6.0	—	4.2	6.0	mA
Load Regulation	ΔVO-IO	VIN=10V, IO=0.005~1.5A	—	15	50	—	15	100	mV
Line Regulation	ΔVO-VIN	VIN=7~25V, IO=0.5A	—	3	50	—	3	100	mV
Ripple Rejection	RR	VIN=10V, IO=0.5A, ein=2Vp-p, f=120Hz	68	78	—	68	78	—	dB
Output Noise Voltage	VNO	VIN=10V, BW=10Hz~100kHz, IO=0.5A	—	45	—	—	45	—	μV
Average Temperature Coefficient of Output Voltage	ΔVO/ΔT	VIN=10V, IO 5mA	—	-0.5	—	—	-0.5	—	mV/°C

6



■ **ELECTRICAL CHARACTERISTICS** ($C_1=0.33\ \mu\text{F}$, $C_0=0.1\ \mu\text{F}$, $T_j=25^\circ\text{C}$) Measurement is to be conducted in pulse testing.

PARAMETER	SYMBOL	TEST CONDITIONS	F TYP.			DL TYP.			UNIT
			MIN.	TYP.	MAX.	MIN.	TYP.	MAX.	
NJM7806A									
Output Voltage	V_O	$V_{IN}=11\text{V}$, $I_O=0.5\text{A}$	5.75	6.0	6.25	5.75	6.0	6.25	V
Quiescent Current	I_Q	$V_{IN}=11\text{V}$, $I_O=0\text{mA}$	—	4.3	6.0	—	4.3	6.0	mA
Load Regulation	ΔV_{O-I_O}	$V_{IN}=11\text{V}$, $I_O=0.005\sim 1.5\text{A}$	—	15	60	—	15	120	mV
Line Regulation	$\Delta V_{O-V_{IN}}$	$V_{IN}=8\sim 25\text{V}$, $I_O=0.5\text{A}$	—	5	60	—	5	120	mV
Ripple Rejection	RR	$V_{IN}=11\text{V}$, $I_O=0.5\text{A}$, $e_{in}=2\text{V}_{P-P}$, $f=120\text{Hz}$	65	75	—	65	75	—	dB
Output Noise Voltage	V_{NO}	$V_{IN}=11\text{V}$, $BW=10\text{Hz}\sim 100\text{kHz}$, $I_O=0.5\text{A}$	—	45	—	—	45	—	μV
Average Temperature Coefficient of Output Voltage	$\Delta V_O/\Delta T$	$V_{IN}=11\text{V}$, $I_O\ 5\text{mA}$	—	-0.6	—	—	-0.6	—	mV/°C
NJM7808A									
Output Voltage	V_O	$V_{IN}=14\text{V}$, $I_O=0.5\text{A}$	7.7	8.0	8.3	7.7	8.0	8.3	V
Quiescent Current	I_Q	$V_{IN}=14\text{V}$, $I_O=0\text{mA}$	—	4.3	6.0	—	4.3	6.0	mA
Load Regulation	ΔV_{O-I_O}	$V_{IN}=14\text{V}$, $I_O=0.005\sim 1.5\text{A}$	—	15	80	—	15	160	mV
Line Regulation	$\Delta V_{O-V_{IN}}$	$V_{IN}=10.5\sim 25\text{V}$, $I_O=0.5\text{A}$	—	6	80	—	6	160	mV
Ripple Rejection	RR	$V_{IN}=14\text{V}$, $I_O=0.5\text{A}$, $e_{in}=2\text{V}_{P-P}$, $f=120\text{Hz}$	62	72	—	62	72	—	dB
Output Noise Voltage	V_{NO}	$V_{IN}=14\text{V}$, $BW=10\text{Hz}\sim 100\text{kHz}$, $I_O=0.5\text{A}$	—	55	—	—	55	—	μV
Average Temperature Coefficient of Output Voltage	$\Delta V_O/\Delta T$	$V_{IN}=14\text{V}$, $I_O\ 5\text{mA}$	—	-0.8	—	—	-0.8	—	mV/°C
NJM7809A									
Output Voltage	V_O	$V_{IN}=15\text{V}$, $I_O=0.5\text{A}$	8.65	9.0	9.35	8.65	9.0	9.35	V
Quiescent Current	I_Q	$V_{IN}=15\text{V}$, $I_O=0\text{mA}$	—	4.3	6.0	—	4.3	6.0	mA
Load Regulation	ΔV_{O-I_O}	$V_{IN}=15\text{V}$, $I_O=0.005\sim 1.5\text{A}$	—	15	90	—	15	180	mV
Line Regulation	$\Delta V_{O-V_{IN}}$	$V_{IN}=11.5\sim 25\text{V}$, $I_O=0.5\text{A}$	—	7	90	—	7	180	mV
Ripple Rejection	RR	$V_{IN}=15\text{V}$, $I_O=0.5\text{A}$, $e_{in}=2\text{V}_{P-P}$, $f=120\text{Hz}$	62	72	—	62	72	—	dB
Output Noise Voltage	V_{NO}	$V_{IN}=15\text{V}$, $BW=10\text{Hz}\sim 100\text{kHz}$, $I_O=0.5\text{A}$	—	60	—	—	60	—	μV
Average Temperature Coefficient of Output Voltage	$\Delta V_O/\Delta T$	$V_{IN}=15\text{V}$, $I_O\ 5\text{mA}$	—	-0.9	—	—	-0.9	—	mV/°C
NJM7812A									
Output Voltage	V_O	$V_{IN}=19\text{V}$, $I_O=0.5\text{A}$	11.5	12.0	12.5	11.5	12.0	12.5	V
Quiescent Current	I_Q	$V_{IN}=19\text{V}$, $I_O=0\text{mA}$	—	4.3	6.0	—	4.3	6.0	mA
Load Regulation	ΔV_{O-I_O}	$V_{IN}=19\text{V}$, $I_O=0.005\sim 1.5\text{A}$	—	25	120	—	25	240	mV
Line Regulation	$\Delta V_{O-V_{IN}}$	$V_{IN}=14.5\sim 30\text{V}$, $I_O=0.5\text{A}$	—	10	120	—	10	240	mV
Ripple Rejection	RR	$V_{IN}=19\text{V}$, $I_O=0.5\text{A}$, $e_{in}=2\text{V}_{P-P}$, $f=120\text{Hz}$	61	71	—	61	71	—	dB
Output Noise Voltage	V_{NO}	$V_{IN}=19\text{V}$, $BW=10\text{Hz}\sim 100\text{kHz}$, $I_O=0.5\text{A}$	—	75	—	—	75	—	μV
Average Temperature Coefficient of Output Voltage	$\Delta V_O/\Delta T$	$V_{IN}=19\text{V}$, $I_O\ 5\text{mA}$	—	-1.2	—	—	-1.2	—	mV/°C

6



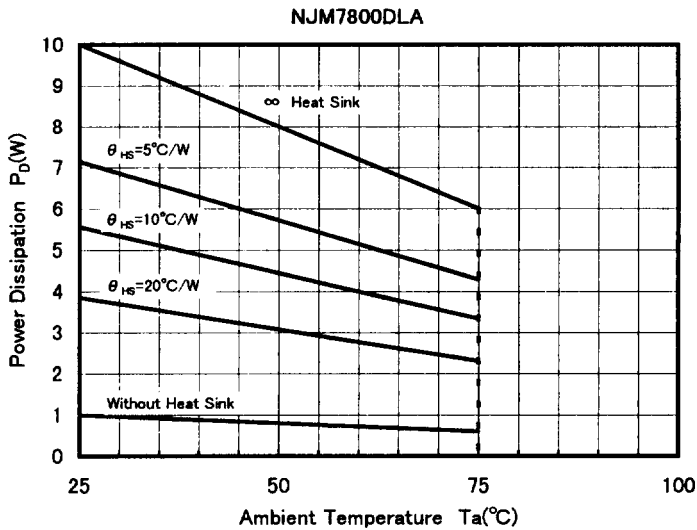
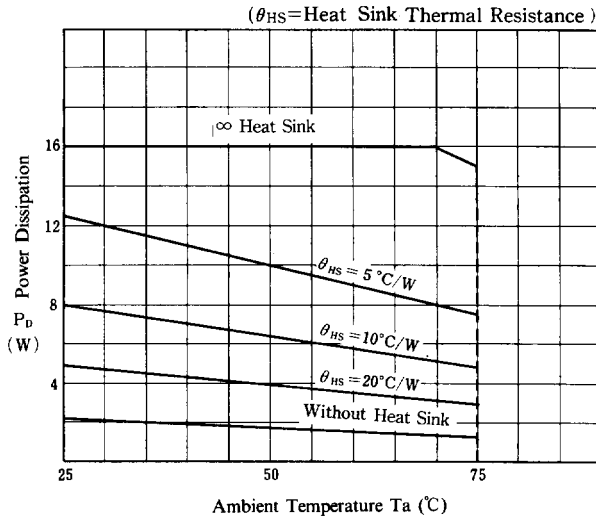
■ ELECTRICAL CHARACTERISTICS (C₁=0.33 μF, C₀=0.1 μF, T_j=25°C) Measurement is to be conducted in pulse testing.

PARAMETER	SYMBOL	TEST CONDITIONS	F TYP.			DL TYP.			UNIT
			MIN.	TYP.	MAX.	MIN.	TYP.	MAX.	
NJM7815A									
Output Voltage	V _O	V _{IN} =23V, I _O =0.5A	14.4	15.0	15.6	14.4	15.0	15.6	V
Quiescent Current	I _Q	V _{IN} =23V, I _O =0mA	—	4.4	6.0	—	4.4	6.0	mA
Load Regulation	ΔV _O -I _O	V _{IN} =23V, I _O =0.005~1.5A	—	35	150	—	35	300	mV
Line Regulation	ΔV _O -V _{IN}	V _{IN} =17.5~30V, I _O =0.5A	—	11	150	—	11	300	mV
Ripple Rejection	RR	V _{IN} =23V, I _O =0.5A, e _{in} =2V _{P-P} , f=120Hz	60	70	—	60	70	—	dB
Output Noise Voltage	V _{NO}	V _{IN} =23V, BW=10Hz~100kHz, I _O =0.5A	—	90	—	—	90	—	μV
Average Temperature Coefficient of Output Voltage	ΔV _O /ΔT	V _{IN} =23V, I _O 5mA	—	-1.5	—	—	-1.5	—	mV/°C
NJM7818A									
Output Voltage	V _O	V _{IN} =27V, I _O =0.5A	17.3	18.0	18.7	17.3	18.0	18.7	V
Quiescent Current	I _Q	V _{IN} =27V, I _O =0mA	—	4.5	6.0	—	4.5	6.0	mA
Load Regulation	ΔV _O -I _O	V _{IN} =27V, I _O =0.005~1.5A	—	55	180	—	55	360	mV
Line Regulation	ΔV _O -V _{IN}	V _{IN} =21~33V, I _O =0.5A	—	15	180	—	15	360	mV
Ripple Rejection	RR	V _{IN} =27V, I _O =0.5A, e _{in} =2V _{P-P} , f=120Hz	59	69	—	59	69	—	dB
Output Noise Voltage	V _{NO}	V _{IN} =27V, BW=10Hz~100kHz, I _O =0.5A	—	100	—	—	100	—	μV
Average Temperature Coefficient of Output Voltage	ΔV _O /ΔT	V _{IN} =27V, I _O 5mA	—	-1.8	—	—	-1.8	—	mV/°C
NJM7820A									
Output Voltage	V _O	V _{IN} =29V, I _O =0.5A	19.2	20.0	20.8	19.2	20.0	20.8	V
Quiescent Current	I _Q	V _{IN} =29V, I _O =0mA	—	4.5	6.0	—	4.5	6.0	mA
Load Regulation	ΔV _O -I _O	V _{IN} =29V, I _O =0.005~1.5A	—	61	200	—	61	400	mV
Line Regulation	ΔV _O -V _{IN}	V _{IN} =23~35V, I _O =0.5A	—	16	200	—	16	400	mV
Ripple Rejection	RR	V _{IN} =29V, I _O =0.5A, e _{in} =2V _{P-P} , f=120Hz	58	68	—	58	68	—	dB
Output Noise Voltage	V _{NO}	V _{IN} =29V, BW=10Hz~100kHz, I _O =0.5A	—	120	—	—	120	—	μV
Average Temperature Coefficient of Output Voltage	ΔV _O /ΔT	V _{IN} =29V, I _O 5mA	—	-2.0	—	—	-2.0	—	mV/°C
NJM7824A									
Output Voltage	V _O	V _{IN} =33V, I _O =0.5A	23.0	24.0	25.0	23.0	24.0	25.0	V
Quiescent Current	I _Q	V _{IN} =33V, I _O =0mA	—	4.6	6.0	—	4.6	6.0	mA
Load Regulation	ΔV _O -I _O	V _{IN} =33V, I _O =0.005~1.5A	—	65	240	—	65	480	mV
Line Regulation	ΔV _O -V _{IN}	V _{IN} =27~38V, I _O =0.5A	—	18	240	—	18	480	mV
Ripple Rejection	RR	V _{IN} =33V, I _O =0.5A, e _{in} =2V _{P-P} , f=120Hz	56	66	—	56	66	—	dB
Output Noise Voltage	V _{NO}	V _{IN} =33V, BW=10Hz~100kHz, I _O =0.5A	—	120	—	—	120	—	μV
Average Temperature Coefficient of Output Voltage	ΔV _O /ΔT	V _{IN} =33V, I _O 5mA	—	-2.4	—	—	-2.4	—	mV/°C

6

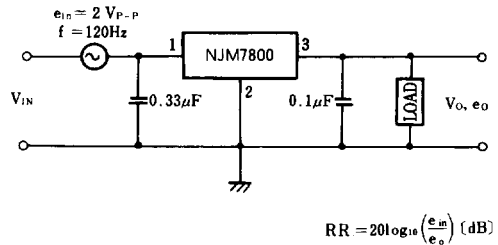
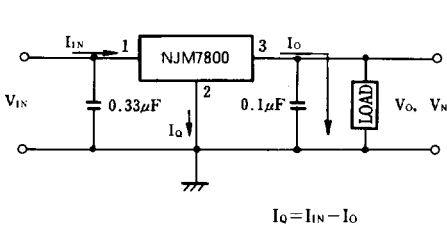


POWER DISSIPATION VS. AMBIENT TEMPERATURE



TEST CIRCUIT

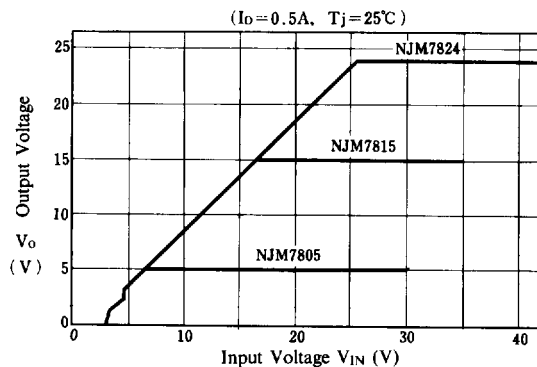
1. Output Voltage, Line Regulation, Load Regulation, Quiescent Current, Average Temperature Coefficient of Output Voltage, Output Noise Voltage
2. Ripple Rejection



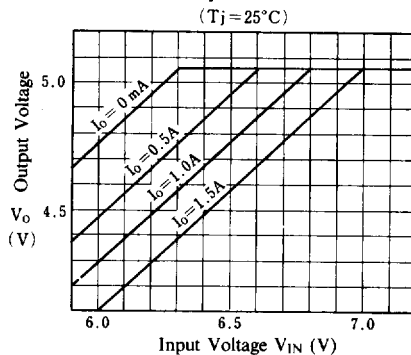


■ TYPICAL CHARACTERISTICS

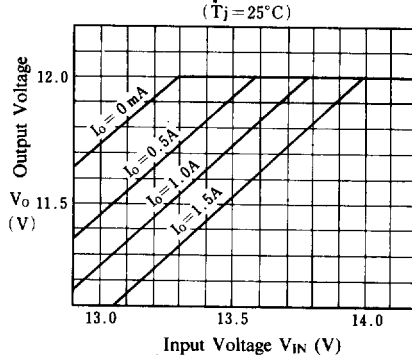
NJM7805/15/24 Output Characteristics



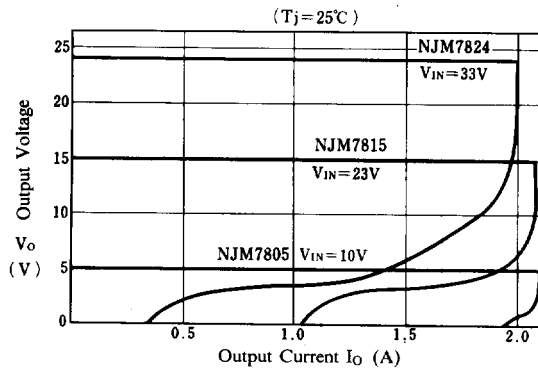
NJM7805 Dropout Characteristics



NJM7812 Dropout Characteristics



NJM7805/15/24 Load Characteristics



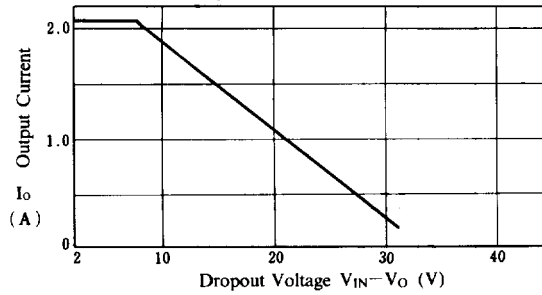
6



■ TYPICAL CHARACTERISTICS

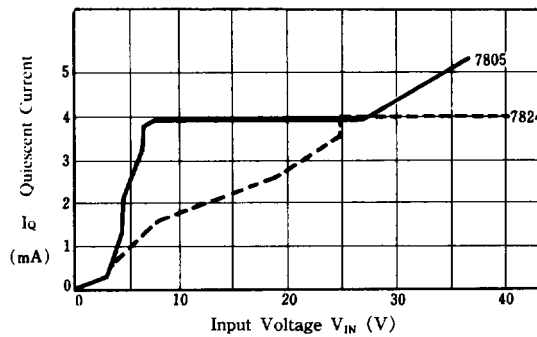
NJM7800 Series Short Circuit Output Current

($T_j = 25^\circ\text{C}$, ∞ Heat Sink)

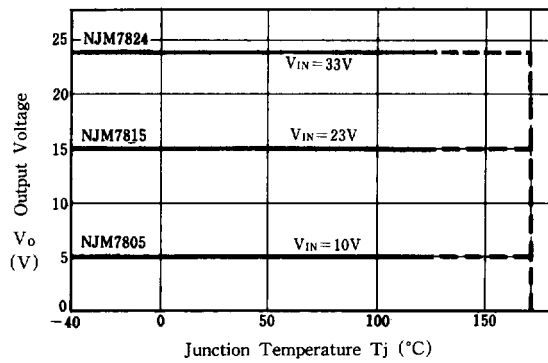


NJM7805/24 Quiescent Current vs. Input Voltage

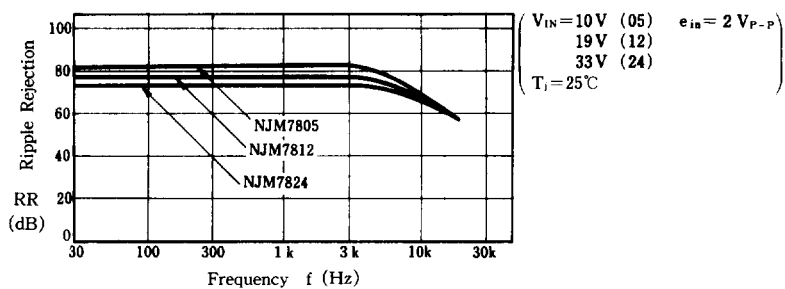
($T_j = 25^\circ\text{C}$)



NJM7805/15/24 Output Voltage vs. Junction Temperature



NJM7805/12/24 Ripple Rejection vs. Frequency

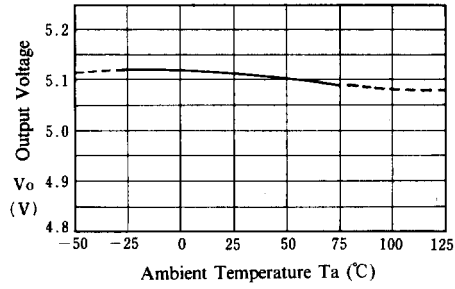


6



■ TYPICAL CHARACTERISTICS

NJM7805 Output Voltage vs. Temperature



NJM7808 Output Voltage vs. Temperature

