

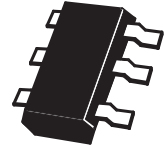
SuperSOT™ 40V PNP SILICON LOW SATURATION SWITCHING TRANSISTOR

SUMMARY

$V_{CE0} = -40V$; $R_{SAT} = 105m\Omega$; $I_C = -2A$

DESCRIPTION

This new 4th generation ultra low saturation transistor utilises the Zetex matrix structure combined with advanced assembly techniques to give extremely low on state losses. This makes it ideal for high efficiency, low voltage switching applications.



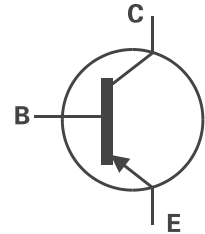
SOT23-6

FEATURES

- Low Equivalent On Resistance
- Extremely Low Saturation Voltage
- h_{FE} characterised up to 3A
- $I_C = 2.0A$ Continuous Collector Current
- SOT23-6 package

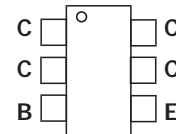
APPLICATIONS

- DC - DC Converters
- Power Management Functions
- Power switches
- Motor control



ORDERING INFORMATION

| DEVICE | REEL SIZE (inches) | TAPE WIDTH (mm) | QUANTITY PER REEL |
|---------------|--------------------|-----------------|-------------------|
| ZXT10P40DE6TA | 7 | 8mm embossed | 3000 units |
| ZXT10P40DE6TC | 13 | 8mm embossed | 10000 units |



Top View

DEVICE MARKING

720

ZXT10P40DE6

ABSOLUTE MAXIMUM RATINGS.

| PARAMETER | SYMBOL | LIMIT | UNIT |
|---|---------------|-------------|---------------------------|
| Collector-Base Voltage | V_{CBO} | -40 | V |
| Collector-Emitter Voltage | V_{CEO} | -40 | V |
| Emitter-Base Voltage | V_{EBO} | -5 | V |
| Peak Pulse Current | I_{CM} | -4 | A |
| Continuous Collector Current | I_C | -2 | A |
| Base Current | I_B | -500 | mA |
| Power Dissipation at $T_A=25^\circ\text{C}$ (a) Linear Derating Factor | P_D | 1.1 8.8 | W mW/ $^\circ\text{C}$ |
| Power Dissipation at $T_A=25^\circ\text{C}$ (b) Linear Derating Factor | P_D | 1.7 13.6 | W mW/ $^\circ\text{C}$ |
| Operating and Storage Temperature Range | $T_J:T_{stg}$ | -55 to +150 | $^\circ\text{C}$ |

THERMAL RESISTANCE

| PARAMETER | SYMBOL | VALUE | UNIT |
|-------------------------|-----------------|-------|--------------------|
| Junction to Ambient (a) | $R_{\theta JA}$ | 113 | $^\circ\text{C/W}$ |
| Junction to Ambient (b) | $R_{\theta JA}$ | 73 | $^\circ\text{C/W}$ |

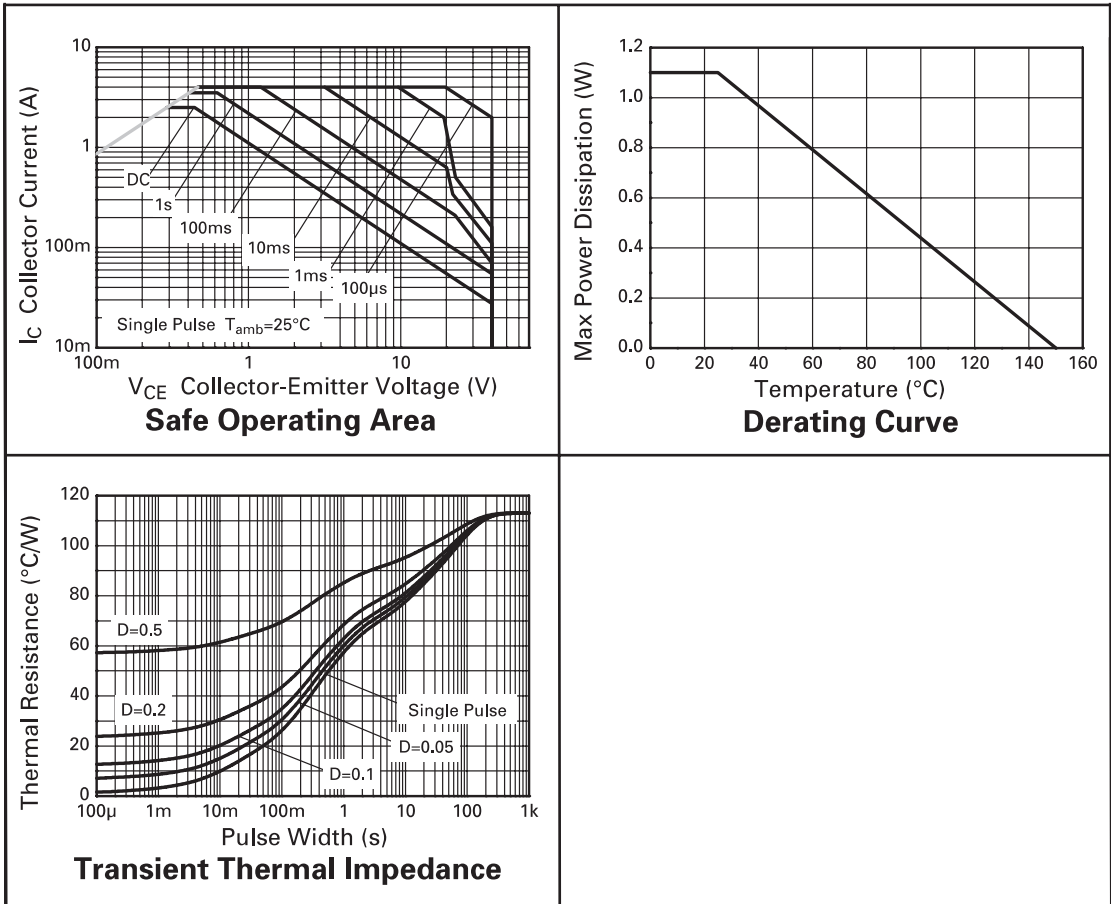
NOTES

(a) For a device surface mounted on 25mm x 25mm FR4 PCB with high coverage of single sided 1oz copper, in still air conditions

(b) For a device surface mounted on FR4 PCB measured at $t \leq 5$ secs.

ZXT10P40DE6

TYPICAL CHARACTERISTICS



ZXT10P40DE6

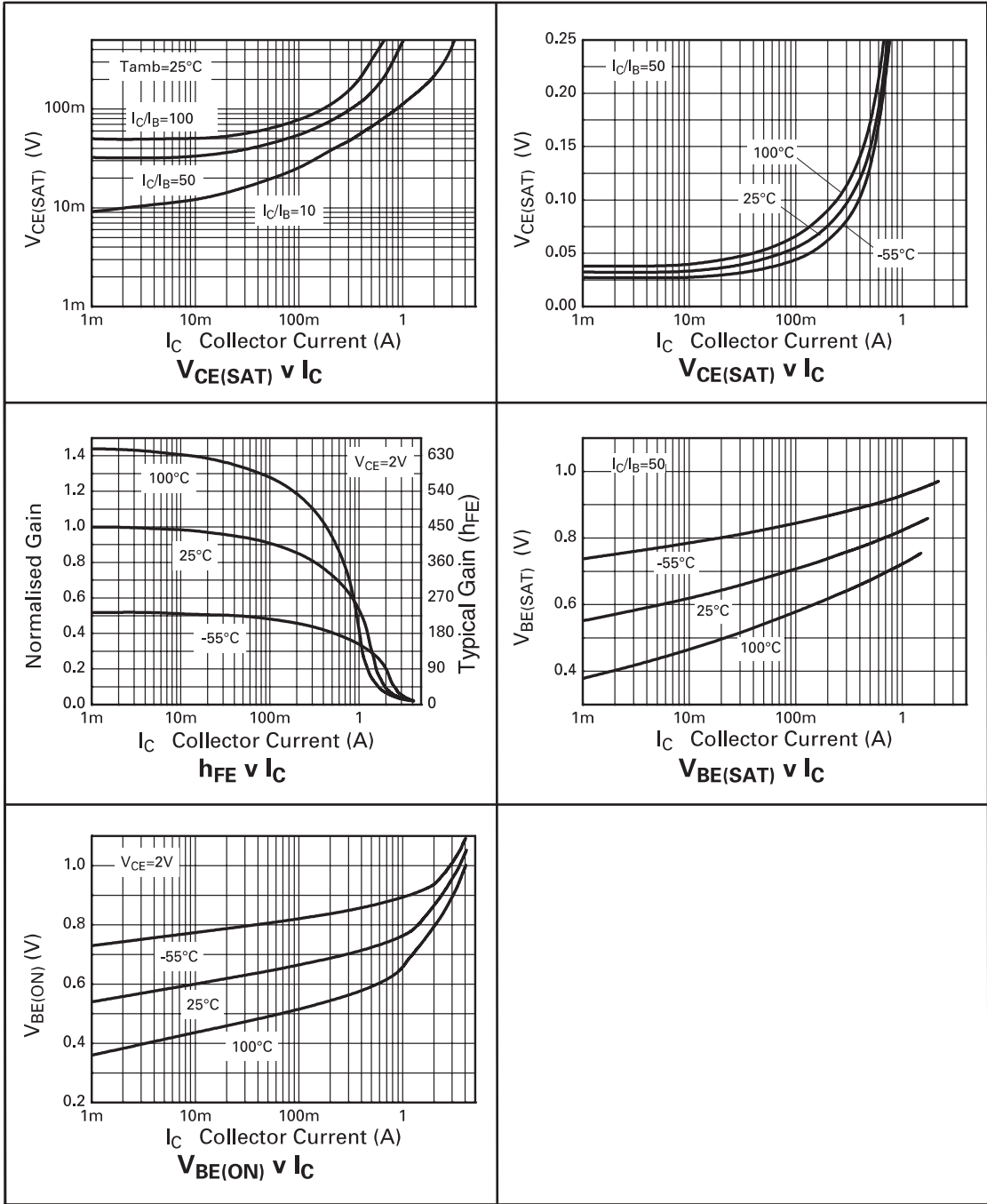
ELECTRICAL CHARACTERISTICS (at $T_{amb} = 25^{\circ}\text{C}$ unless otherwise stated).

| PARAMETER | SYMBOL | MIN. | TYP. | MAX. | UNIT | CONDITIONS. |
|---------------------------------------|---------------|-------------------------------|--------------------------------|-----------------------------|----------------------|---|
| Collector-Base Breakdown Voltage | $V_{(BR)CBO}$ | -40 | -80 | | V | $I_C = -100\mu\text{A}$ |
| Collector-Emitter Breakdown Voltage | $V_{(BR)CEO}$ | -40 | -70 | | V | $I_C = -10\text{mA}^*$ |
| Emitter-Base Breakdown Voltage | $V_{(BR)EBO}$ | -5 | -8.8 | | V | $I_E = -100\mu\text{A}$ |
| Collector Cut-Off Current | I_{CBO} | | | -100 | nA | $V_{CB} = -35\text{V}$ |
| Emitter Cut-Off Current | I_{EBO} | | | -100 | nA | $V_{EB} = -4\text{V}$ |
| Collector Emitter Cut-Off Current | I_{CES} | | | -100 | nA | $V_{CES} = -35\text{V}$ |
| Collector-Emitter Saturation Voltage | $V_{CE(sat)}$ | | -25 -150 -195 -210 | -40 -220 -300 -300 | mV mV mV mV | $I_C = -0.1\text{A}, I_B = -10\text{mA}^*$ $I_C = -1\text{A}, I_B = -50\text{mA}^*$ $I_C = -1.5\text{A}, I_B = -50\text{mA}^*$ $I_C = -2\text{A}, I_B = -200\text{mA}^*$ |
| Base-Emitter Saturation Voltage | $V_{BE(sat)}$ | | -0.95 | -1.00 | V | $I_C = -2\text{A}, I_B = -200\text{mA}^*$ |
| Base-Emitter Turn-On Voltage | $V_{BE(on)}$ | | -0.85 | -0.95 | V | $I_C = -2\text{A}, V_{CE} = -2\text{V}^*$ |
| Static Forward Current Transfer Ratio | h_{FE} | 300 300 180 60 12 | 480 450 290 130 22 | | | $I_C = -10\text{mA}, V_{CE} = -2\text{V}^*$ $I_C = -0.1\text{A}, V_{CE} = -2\text{V}^*$ $I_C = -1\text{A}, V_{CE} = -2\text{V}^*$ $I_C = -1.5\text{A}, V_{CE} = -2\text{V}^*$ $I_C = -3\text{A}, V_{CE} = -2\text{V}^*$ |
| Transition Frequency | f_T | 150 | 190 | | MHz | $I_C = -50\text{mA}, V_{CE} = -10\text{V}$ $f = 100\text{MHz}$ |
| Output Capacitance | C_{obo} | | 19 | 25 | pF | $V_{CB} = -10\text{V}, f = 1\text{MHz}$ |
| Turn-On Time | $t_{(on)}$ | | 40 | | ns | $V_{CC} = -15\text{V}, I_C = -0.75\text{A}$ $I_{B1} = I_{B2} = -15\text{mA}$ |
| Turn-Off Time | $t_{(off)}$ | | 435 | | ns | |

*Measured under pulsed conditions. Pulse width=300 μs . Duty cycle $\leq 2\%$

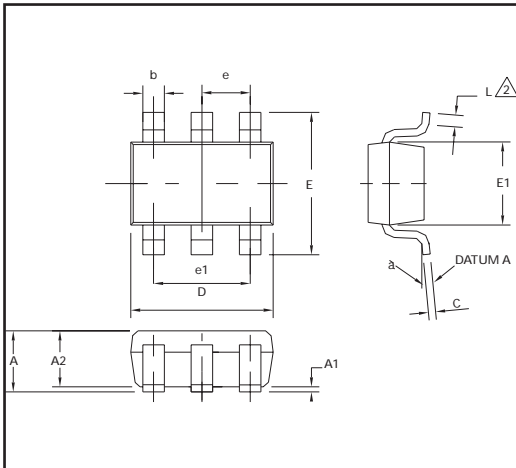
ZXT10P40DE6

TYPICAL CHARACTERISTICS

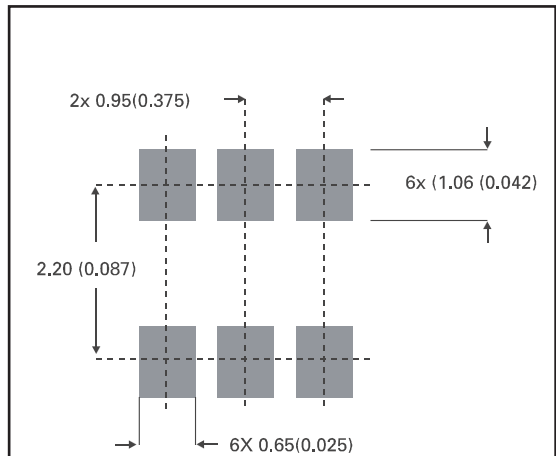


ZXT10P40DE6

PACKAGE DIMENSIONS



PAD LAYOUT DETAILS



| DIM | Millimetres | | Inches | |
|-----|-------------|------|-----------|-------|
| | Min | Max | Min | Max |
| A | 0.90 | 1.45 | 0.35 | 0.057 |
| A1 | 0.00 | 0.15 | 0 | 0.006 |
| A2 | 0.90 | 1.30 | 0.035 | 0.051 |
| b | 0.35 | 0.50 | 0.014 | 0.019 |
| C | 0.09 | 0.20 | 0.0035 | 0.008 |
| D | 2.80 | 3.00 | 0.110 | 0.118 |
| E | 2.60 | 3.00 | 0.102 | 0.118 |
| E1 | 1.50 | 1.75 | 0.059 | 0.069 |
| L | 0.10 | 0.60 | 0.004 | 0.002 |
| e | 0.95 REF | | 0.037 REF | |
| e1 | 1.90 REF | | 0.074 REF | |
| L | 0° | 10° | 0° | 10° |

ZETEX Zetex plc.
 Fields New Road, Chadderton, Oldham, OL9-8NP, United Kingdom.
 Telephone: (44)161 622 4422 (Sales), (44)161 622 4444 (General Enquiries)
 Fax: (44)161 622 4420

Zetex GmbH
 Streitfeldstraße 19
 D-81673 München
 Germany
 Telefon: (49) 89 45 49 49 0
 Fax: (49) 89 45 49 49 49

Zetex Inc.
 47 Mall Drive, Unit 4
 Commack NY 11725
 USA
 Telephone: (631) 543-7100
 Fax: (631) 864-7630

Zetex (Asia) Ltd.
 3701-04 Metroplaza, Tower 1
 Hing Fong Road,
 Kwai Fong, Hong Kong
 Telephone: (852) 26100 611
 Fax: (852) 24250 494

These are supported by
 agents and distributors in
 major countries world-wide
 © Zetex plc 2000

Internet: <http://www.zetex.com>

This publication is issued to provide outline information only which (unless agreed by the Company in writing) may not be used, applied or reproduced for any purpose or form part of any order or contract or be regarded as a representation relating to the products or services concerned. The Company reserves the right to alter without notice the specification, design, price or conditions of supply of any product or service.

ZETEX

ISSUE 1 - SEPTEMBER 2000