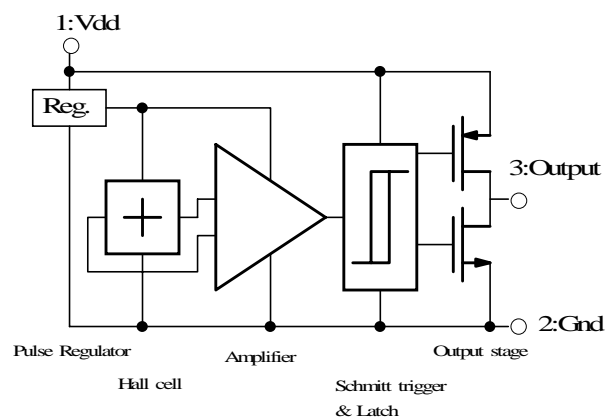


LOW POWER UNIPOLAR HALL EFFECT SWITCH EW-667

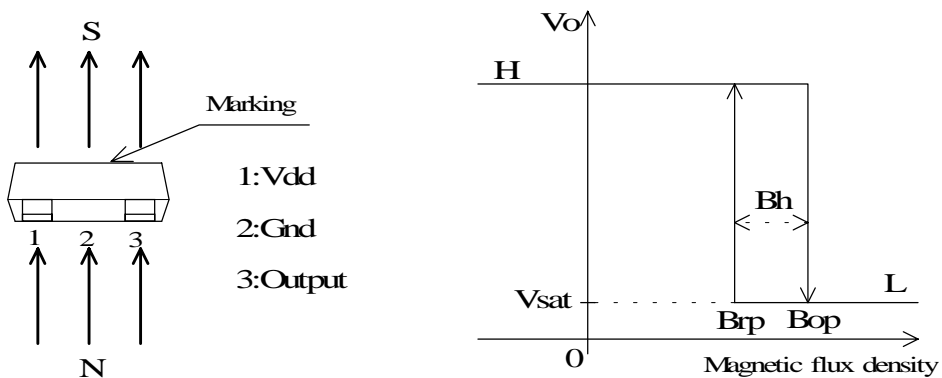
◆ FEATURES

- Low Power, $I_{dd}=5\mu A$ (typ. at $V_{dd}=3V$)
- Effective Performance at Low Magnetic Flux Density
- Highly Resistant to Mechanical Stress
- Stable Operation in Broad Temperature Range
- 3V Operation
- Compact Size Package
- Supplied by Taping

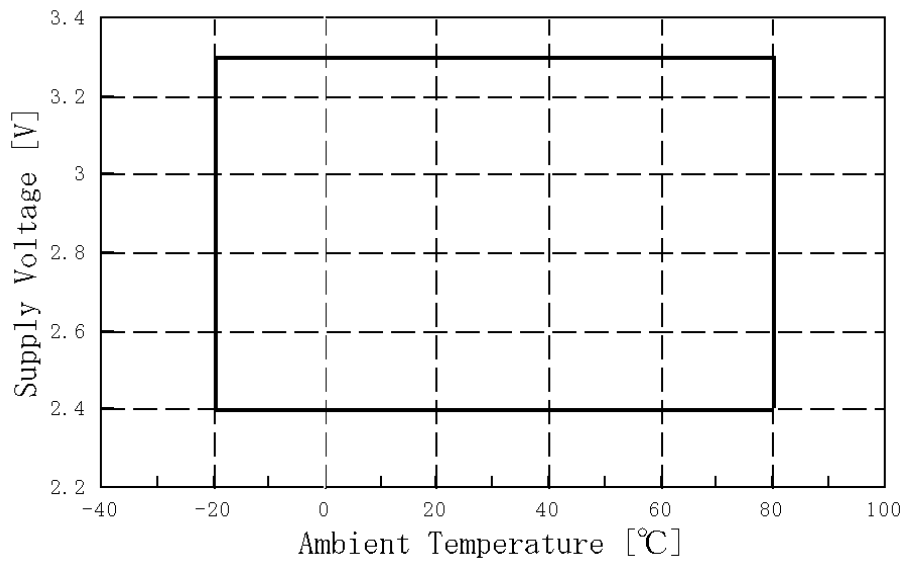
◆ FUNCTIONAL BLOCK DIAGRAM



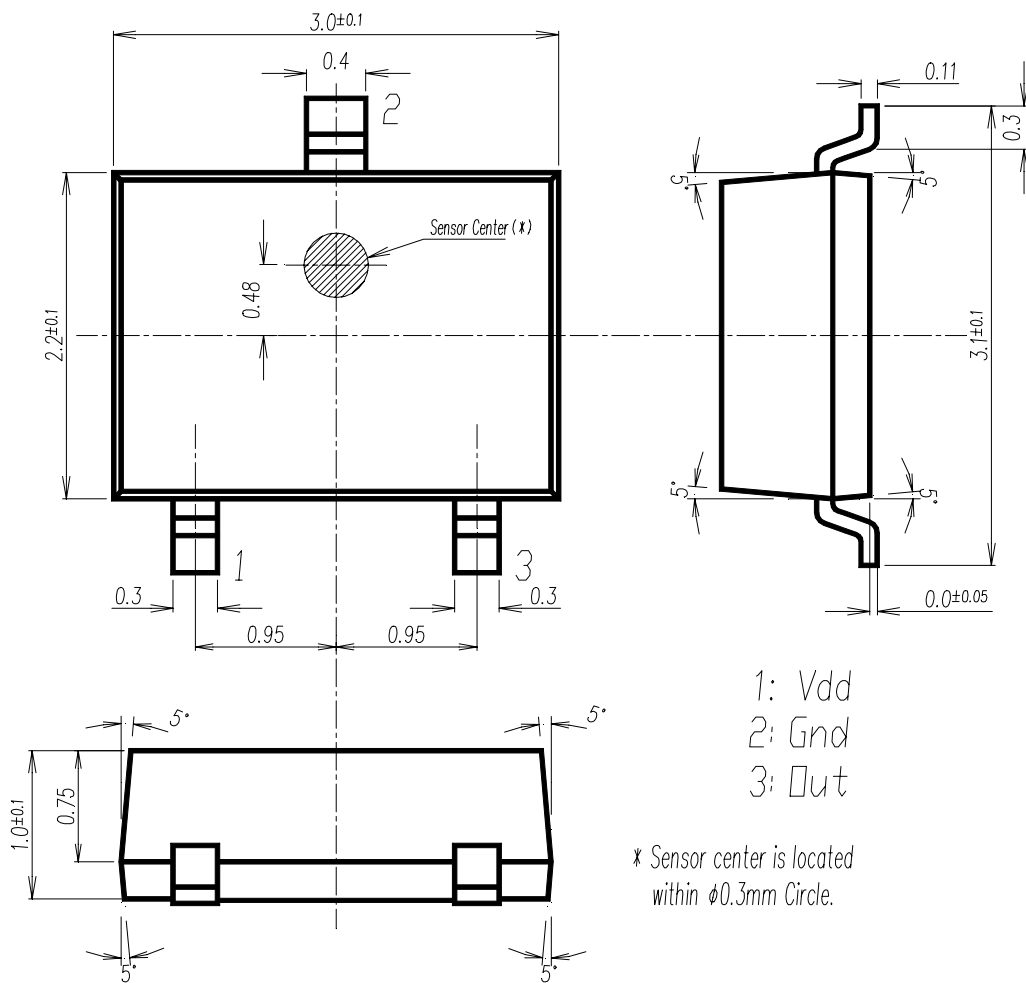
◆ OPERATIONAL CHARACTERISTICS



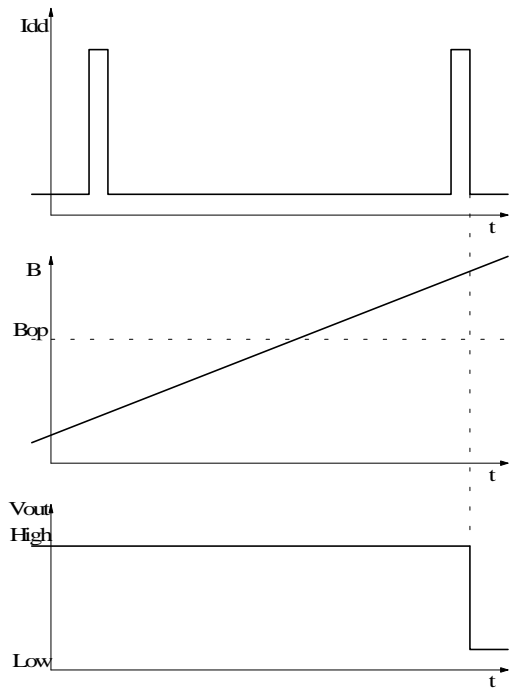
◆ Supply Voltage



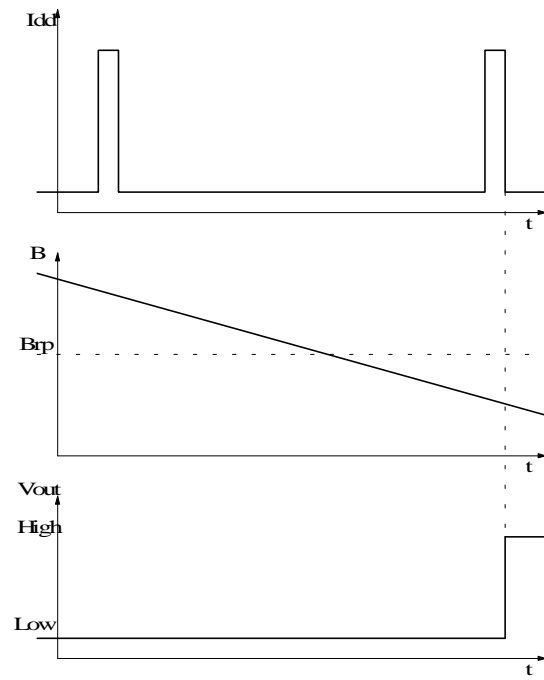
◆ PACKAGE (Dimensions in mm)



◆Function Timing Chart



Operate Point Timing



Release Point Timing