

FUJITSU MEDIA DEVICES
SRF836NQC32D

○SYSTEM AMPS/CDMA Tx FILTER
 ○CARRIER FREQUENCY 824~849 MHz

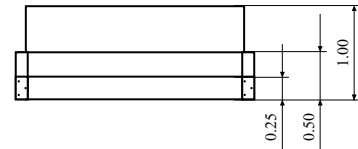
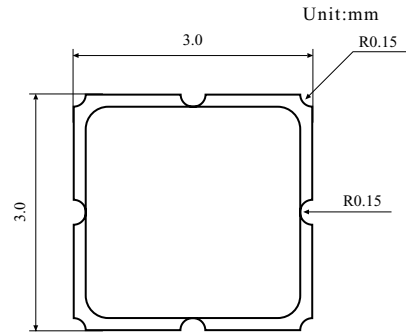
ELECTRICAL CHARACTERISTICS

Ta = -30~+85°C

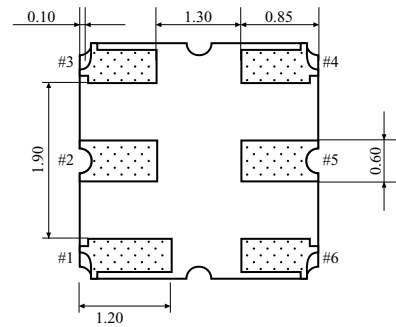
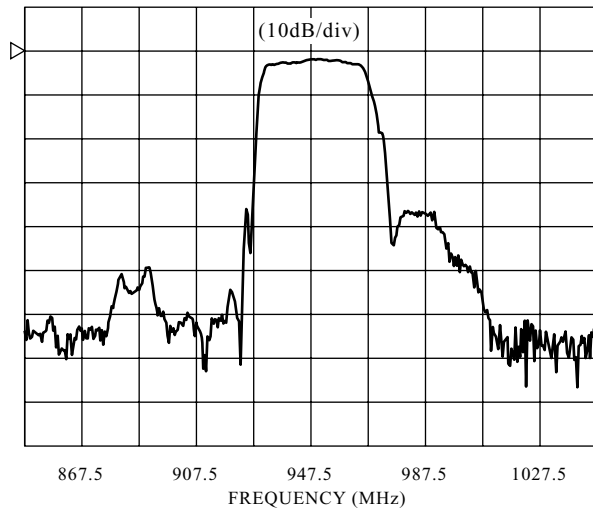
Items	Conditions [MHz]	Min.	Typ.*	Max.	Unit
Maximum insertion loss in pass band	824~ 849	-	2.9	3.4	dB
Pass band flatness	824~ 849	-	1.1	1.6	dB
Out of band rejection (Absolute Value)	DC~ 800	40	51	-	dB
	869~ 894	32	35	-	dB
	978.5~ 1003.8	50	61	-	dB
	1050~ 2600	25	44	-	dB
Pass band VSWR	824~ 849	-	1.8	2.3	-
Nominal impedance		-	50	-	Ω

*Typical values are specified at 25°C

PACKAGE DIMENSION



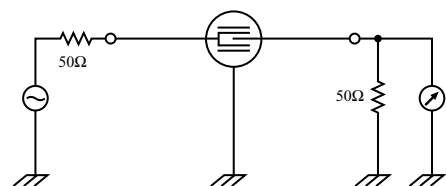
FREQUENCY CHARACTERISTICS



TERMINATIONS

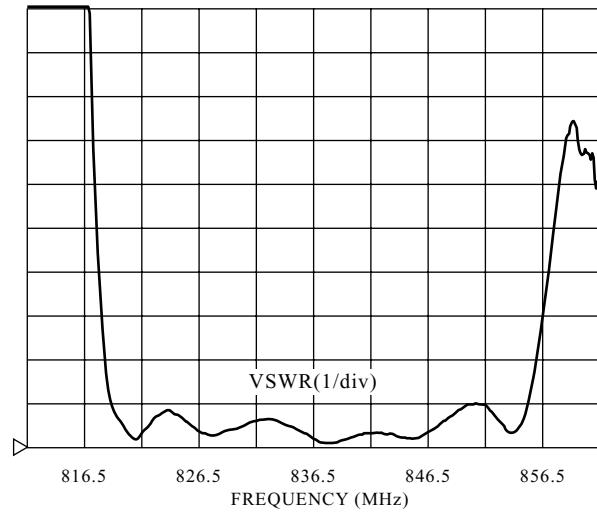
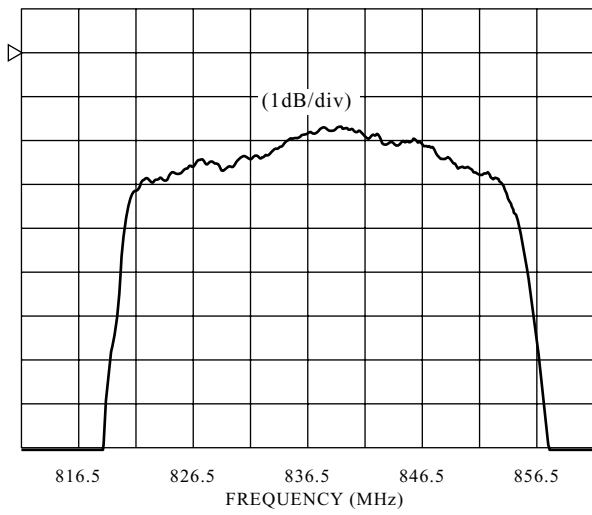
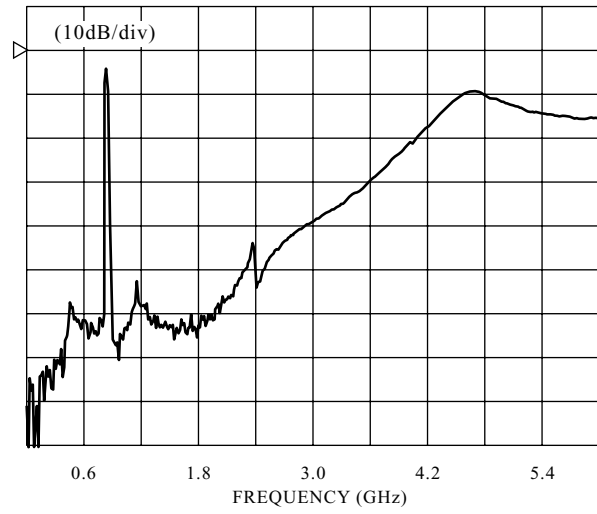
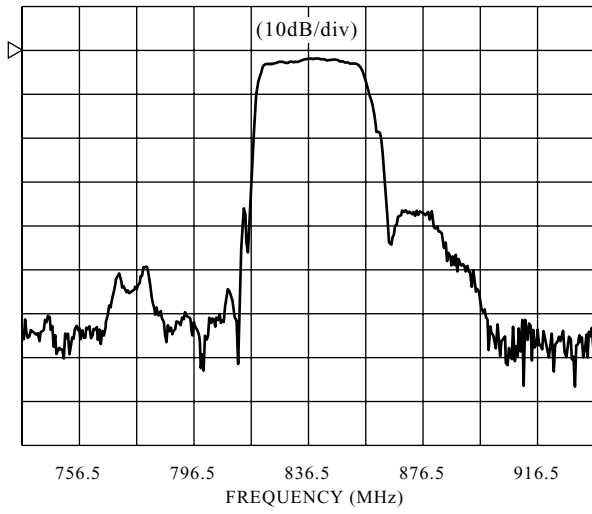
- No.
- #1. GROUND
- #2. INPUT/OUTPUT
- #3. GROUND
- #4. GROUND
- #5. OUTPUT/INPUT
- #6. GROUND

MEASUREMENT CIRCUIT



* The information contained herein is presented only as a guide for the applications of our products. No responsibility is assumed by Fujitsu Media Devices for any infringements of patents or other rights of the third parties which may result from its use. No license is granted by implication or otherwise under any patent or patent rights of Fujitsu Media Devices or others.
 * The information contained herein may be changed without prior notice. It is therefore advisable to contact Fujitsu Media Devices before proceeding with the design of equipment incorporating this product.

FREQUENCY CHARACTERISTICS



ABSOLUTE MAXIMUM RATINGS(Ta=25°C)

(Ta=25°C unless otherwise noted)

Items	Electrodes	Ratings	Notes
DC voltage	Between any two electrodes	0V	
Input power	Between input and ground	13dBm	
Operating temp.		-30~ +85°C	
Storage temp.		-40~ +85°C	