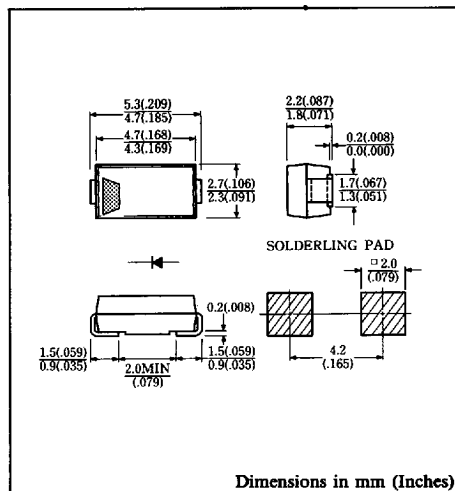


FEATURES

- Surface Mounting Device
- Low Forward Voltage Drop
- Low Power Loss, High Efficiency
- High Surge Capability
- 20 Volts through 100 Volts Types Available
- Packaged in 12mm Tape and Reel
- Not Rolling During Assembly



Approx. Net Weight: 0.06 Grams

MAXIMUM RATINGS

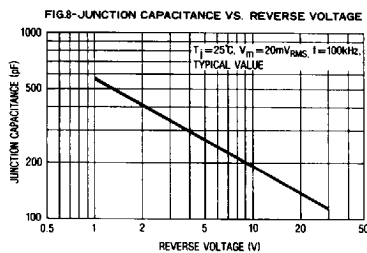
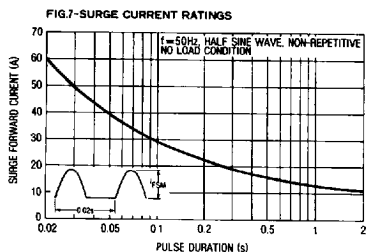
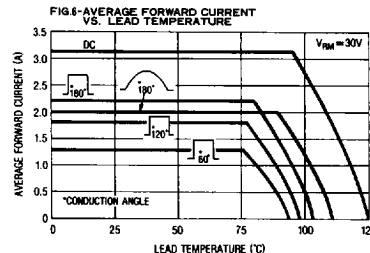
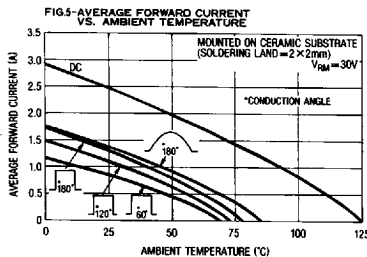
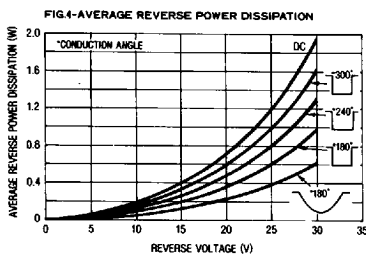
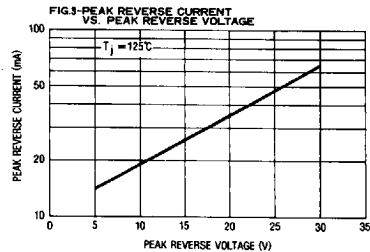
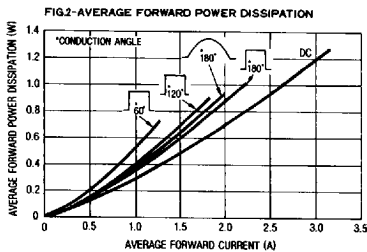
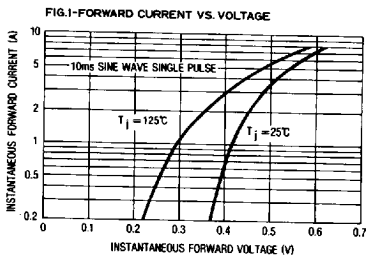
Voltage Rating	Type Symbol	EC20QS03L		Unit
Repetitive Peak Reverse Voltage	$V_{RRM}$	30		V
Electrical Rating	Symbol	Condition	Rating	Unit
Average Rectified Output Current (resistive load)	$I_O$	180° rectangular wave conduction $T_l^* = 79^\circ\text{C}$	2.2	A
		180° sinusoidal wave conduction $T_l^* = 89^\circ\text{C}$	2.0	
RMS Forward Current	$I_{F(RMS)}$		3.14	A
Peak One-cycle Forward Surge Current	$I_{FSM}$	50Hz half sine wave, non-repetitive	60	A
Operating Junction Temperature Range	$T_{jw}$		-40 to 125	°C
Storage Temperature Range	$T_{stg}$		-40 to 125	°C

ELECTRICAL & THERMAL CHARACTERISTICS

Characteristics	Symbol	Test Condition	Max.	Unit
Peak Forward Voltage	$V_{FM}$	$I_{FM} = 2.0\text{A}$ $T_j = 25^\circ\text{C}$	0.45	V
Peak Reverse Current	$I_{RM}$	$V_{RM} = V_{RRM}$ $T_j = 25^\circ\text{C}$	3.0	mA
Thermal Resistance	$R_{th(j-l)}$	Junction to Lead	23	°C/W

\* $T_l$  = Lead Temperature

6615123 0001827 201



6615123 0001828 148