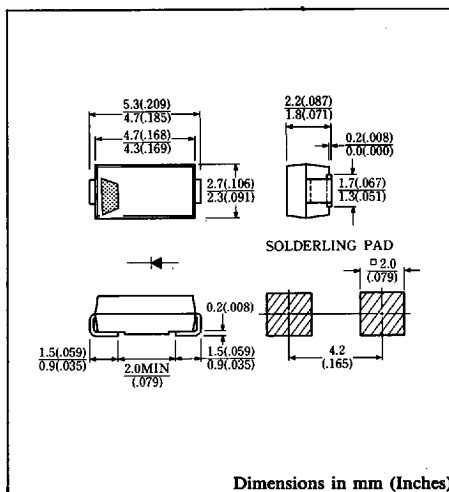


FEATURES

- Surface Mounting Device
- Low Forward Voltage Drop
- Low Power Loss, High Efficiency
- High Surge Capability
- 20 Volts through 100 Volts Types Available
- Packaged in 12mm Tape and Reel
- Not Rolling During Assembly



Approx. Net Weight: 0.06 Grams

MAXIMUM RATINGS

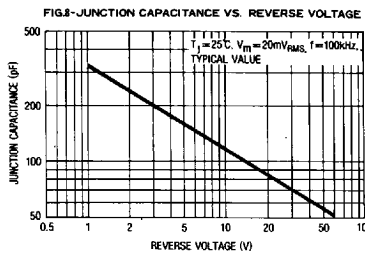
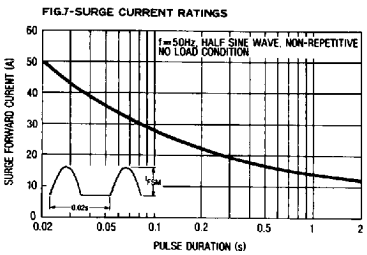
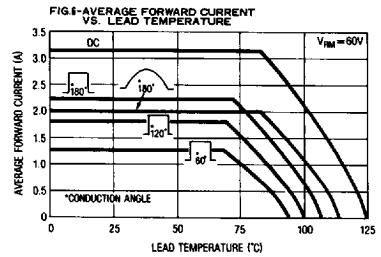
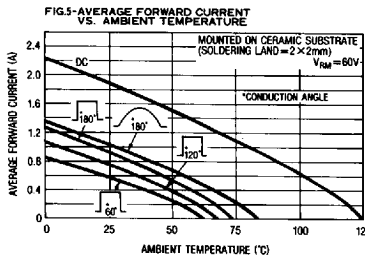
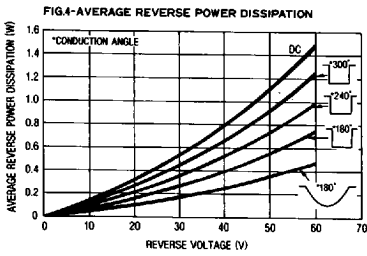
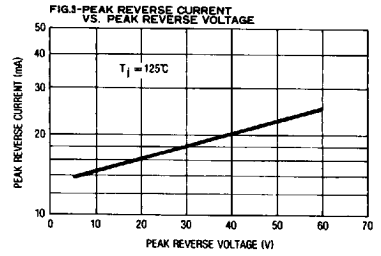
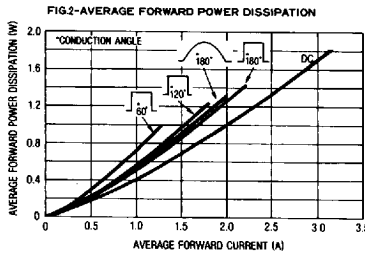
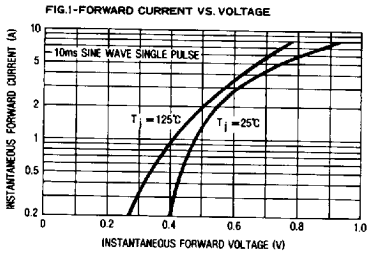
Voltage Rating	Type Symbol	EC20QS06		Unit
Repetitive Peak Reverse Voltage	V_{RRM}	60		V
Electrical Rating	Symbol	Condition	Rating	Unit
Average Rectified Output Current (resistive load)	I_O	180° rectangular wave conduction $T_{\ell}^* = 73^{\circ}\text{C}$	2.2	A
		180° sinusoidal wave conduction $T_{\ell}^* = 83^{\circ}\text{C}$	2.0	
RMS Forward Current	$I_{F(RMS)}$		3.14	A
Peak One-cycle Forward Surge Current	I_{FSM}	50Hz half sine wave, non-repetitive	50	A
Operating Junction Temperature Range	T_{jw}		-40 to 125	°C
Storage Temperature Range	T_{stg}		-40 to 125	°C

ELECTRICAL & THERMAL CHARACTERISTICS

Characteristics	Symbol	Test Condition	Max.	Unit
Peak Forward Voltage	V_{FM}	$I_{FM} = 2.0\text{A}$, $T_j = 25^{\circ}\text{C}$	0.55	V
Peak Reverse Current	I_{RM}	$V_{RM} = V_{RRM}$, $T_j = 25^{\circ}\text{C}$	3.0	mA
Thermal Resistance	$R_{th(j-\ell)}$	Junction to Lead	23	°C/W

* T_{ℓ} = Lead Temperature

6615123 0001831 732



6615123 0001832 679