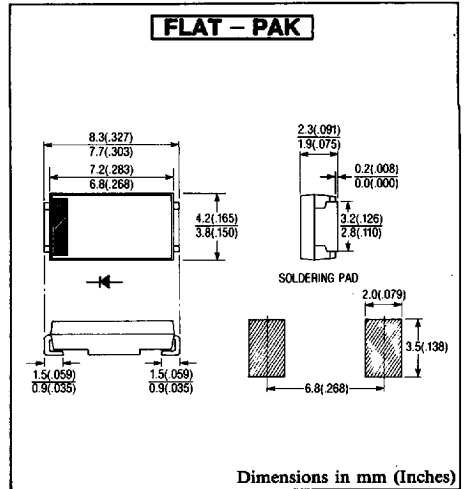


FEATURES

- Surface Mounting Device
- Ultra-Fast Recovery
- Low Forward Voltage Drop
- Low Power Loss, High Efficiency
- High Surge Capability
- Packaged in 16mm Tape and Reel
- Not Rolling During Assembly
- 200 Volts through 600 Volts Types Available



Approx. Net Weight: 0.16 Grams

MAXIMUM RATINGS

Voltage Rating	Type Symbol	NSF03A60		Unit
Repetitive Peak Reverse Voltage	V_{RRM}	600		V
Electrical Rating	Symbol	Condition	Rating	Unit
Average Rectified Output Current	I_O	180° rectangular wave conduction * $T_l = 65^\circ C$	3.3	A
		180° sinusoidal wave conduction * $T_l = 79^\circ C$	3.0	
Peak One-cycle Forward Surge Current	I_{FSM}	50Hz half sine wave 1 cycle, non-repetitive	45	A
Operating Junction Temperature Range	T_{jw}		-40 to 150	°C
Storage Temperature Range	T_{stg}		-40 to 150	°C

ELECTRICAL & THERMAL CHARACTERISTICS

Characteristics	Symbol	Test Condition	Max.	Unit
Peak Forward Voltage	V_{FM}	$I_{FM} = 3A, T_j = 25^\circ C$	1.7	V
Peak Reverse Current	I_{RM}	$V_{RM} = V_{RRM}, T_j = 25^\circ C$	20	μA
Peak Reverse Current	t_{rr}	$I_F = 3A, -di/dt = 50A/\mu s, T_a = 25^\circ C$	35	ns
Thermal Resistance	$R_{th(j-l)}$	Junction to lead	13	°C/W

T_l : Lead Temperature

6615123 0002173 702

FIG.1-FORWARD CURRENT VS. VOLTAGE

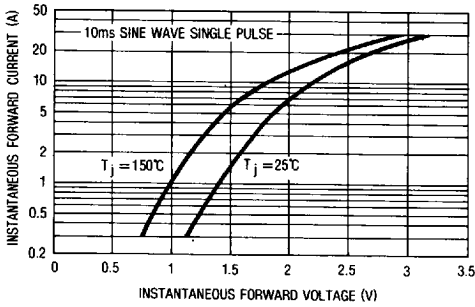


FIG.2-AVERAGE FORWARD POWER DISSIPATION

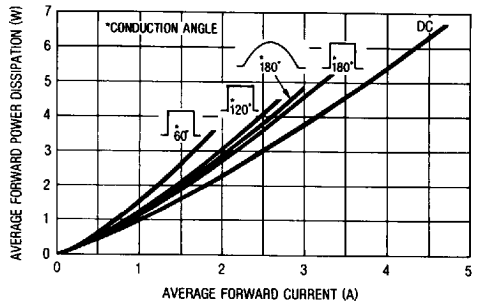


FIG.3-AVERAGE FORWARD CURRENT VS. AMBIENT TEMPERATURE

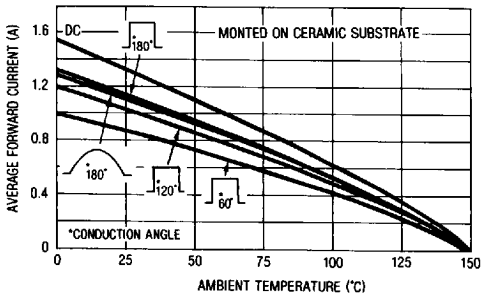


FIG.4-AVERAGE FORWARD CURRENT VS. LEAD TEMPERATURE

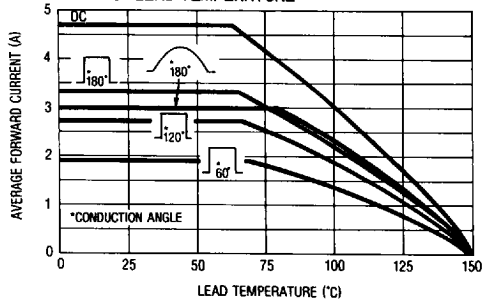
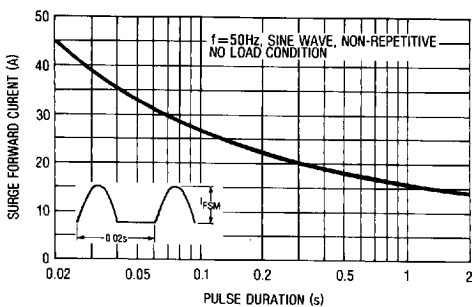


FIG.5-SURGE CURRENT RATINGS



6615123 0002174 649