

2012 Size

1500/1900 MHz

Chip Multilayer Splitter/Combiner

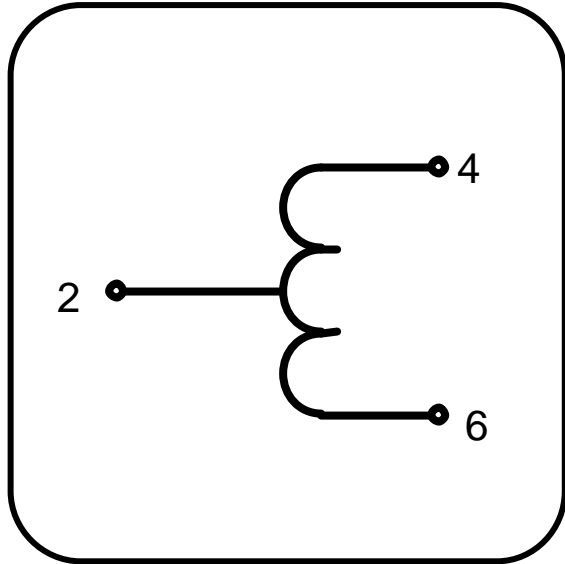
FSLH-S170C

All the technical data and information contained herein are subject to change without notice.

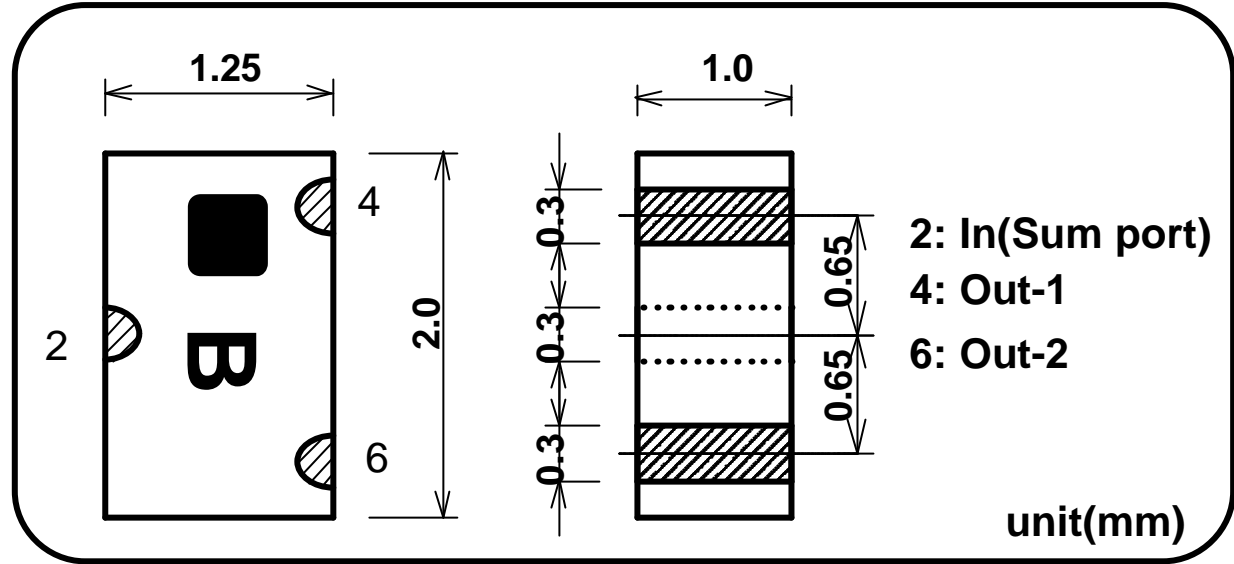


LH-FSLH-S170C-0406A

Equivalent Circuits



Shape & Size



Specifications

Part Name: FSLH-S170C

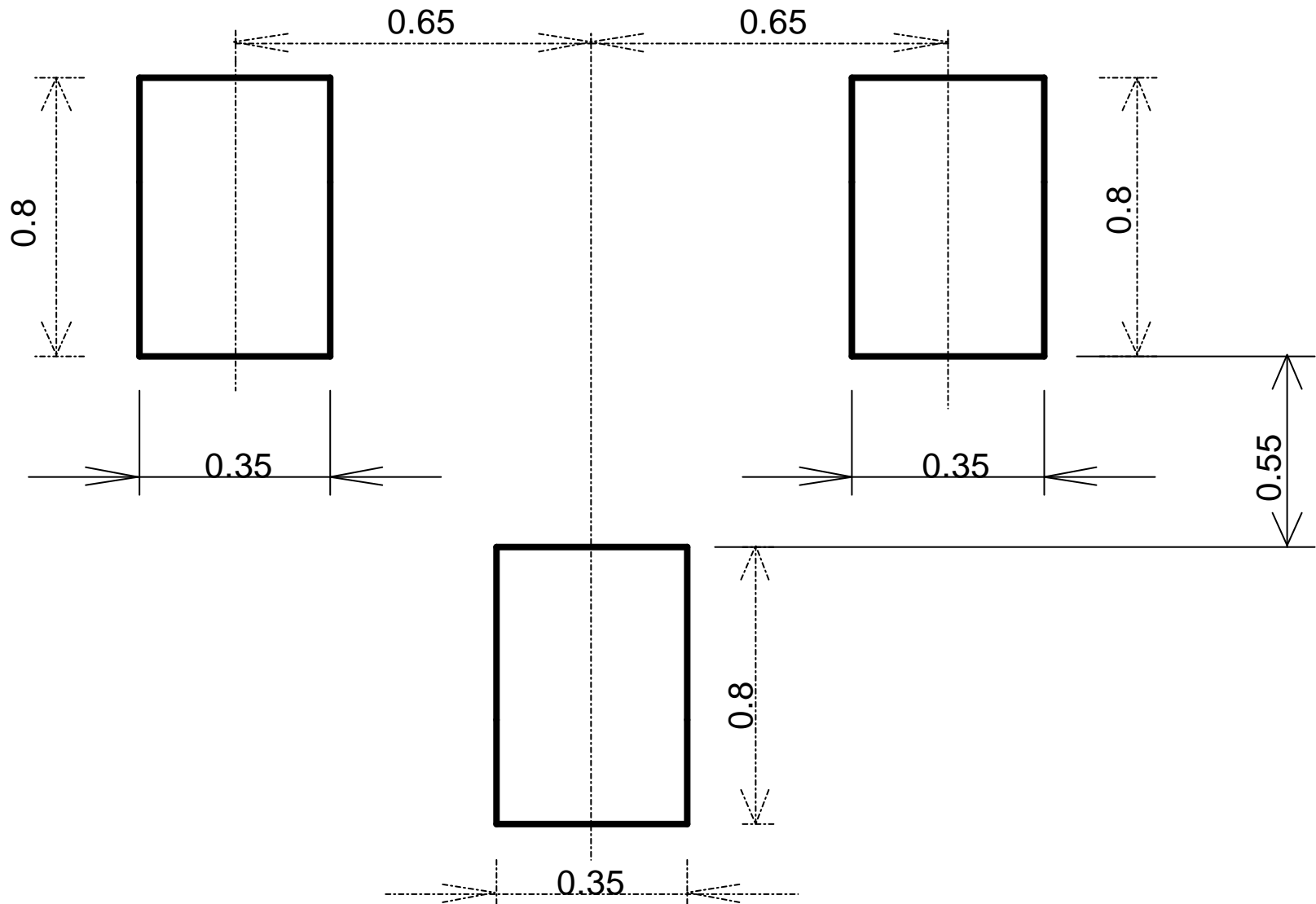
Frequency Range	Matching Capacitor	Insertion Loss *1	Isolation	Return Loss	Handling Power	Temperature Range
1500-1900MHz	1.0pF	1dB Max. (0.20dB Typ.)	12dB Min. (20dB Typ.)	10dB Min. (20dB Typ.)	1W Max. (CW)	-35 to +85 deg.C

*1 Not include splitting loss (3dB)

All the technical data and information contained herein are subject to change without notice.

LH-FSLH-S170C-0406A

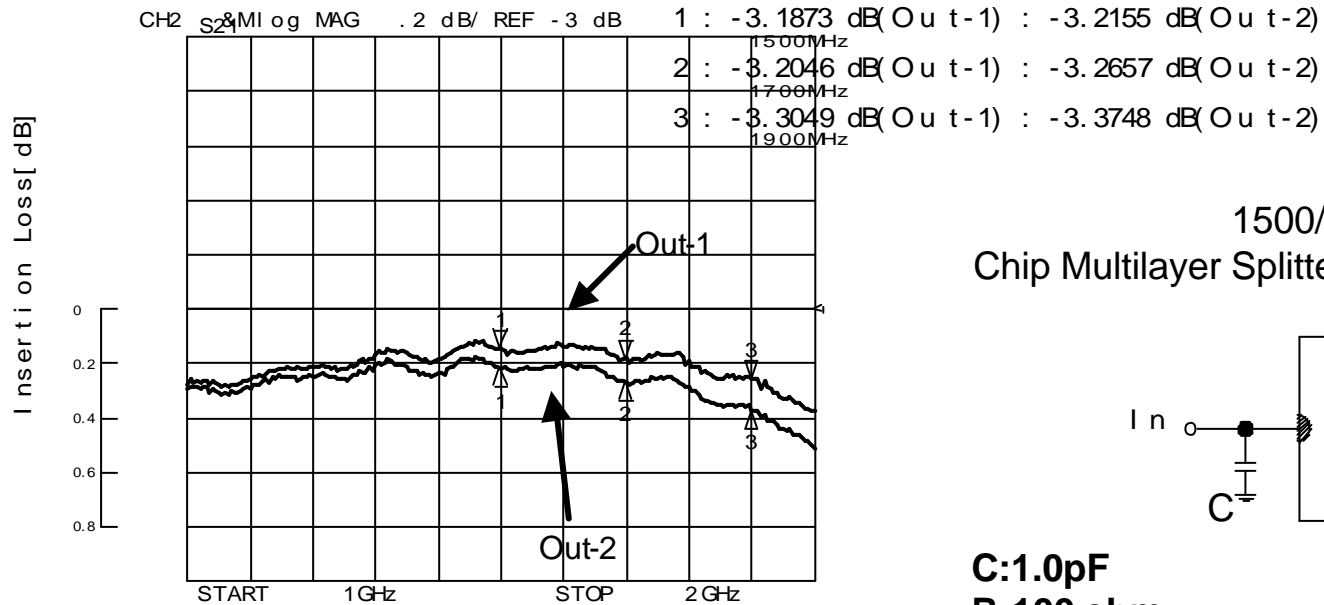
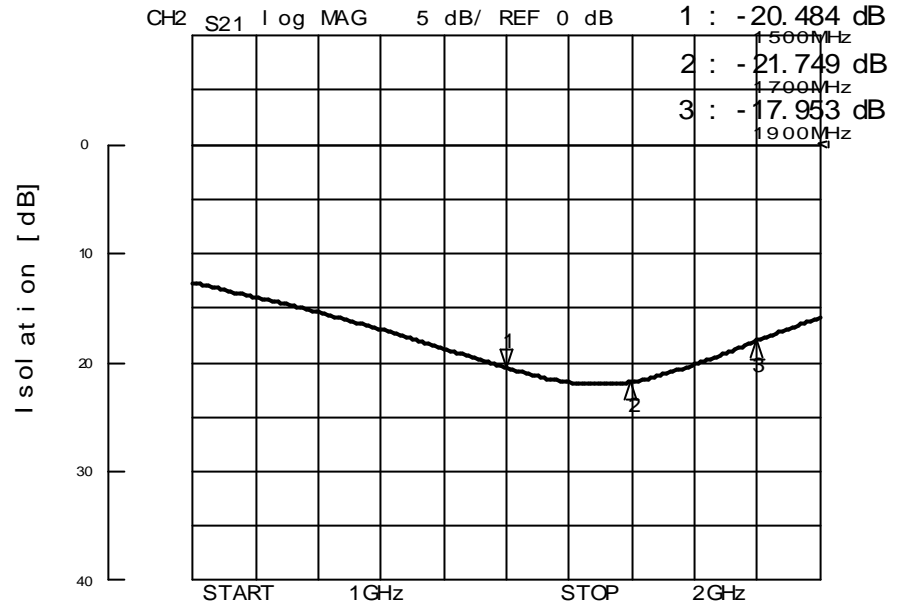
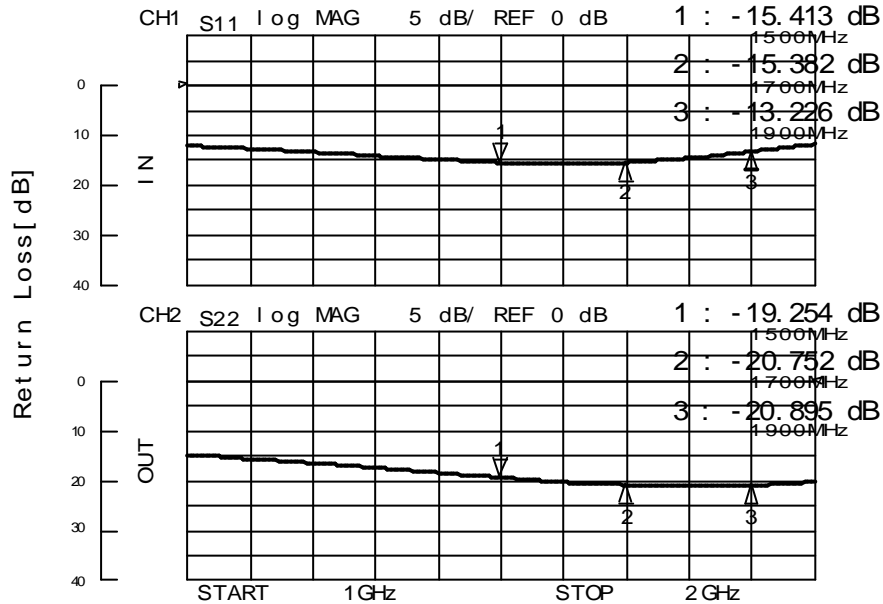
FOOT PATTERN



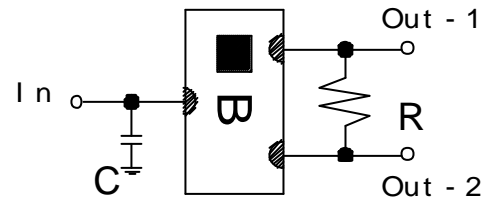
All the technical data and information contained herein are subject to change without notice.

LH-FSLH-S170C-0406A

FSLH-S170C Sample Data



1500/1900 MHz
Chip Multilayer Splitter/Combiner "FSLH-S170C"



C:1.0pF
R:100 ohm

LH-FSLH-S170C-0406A